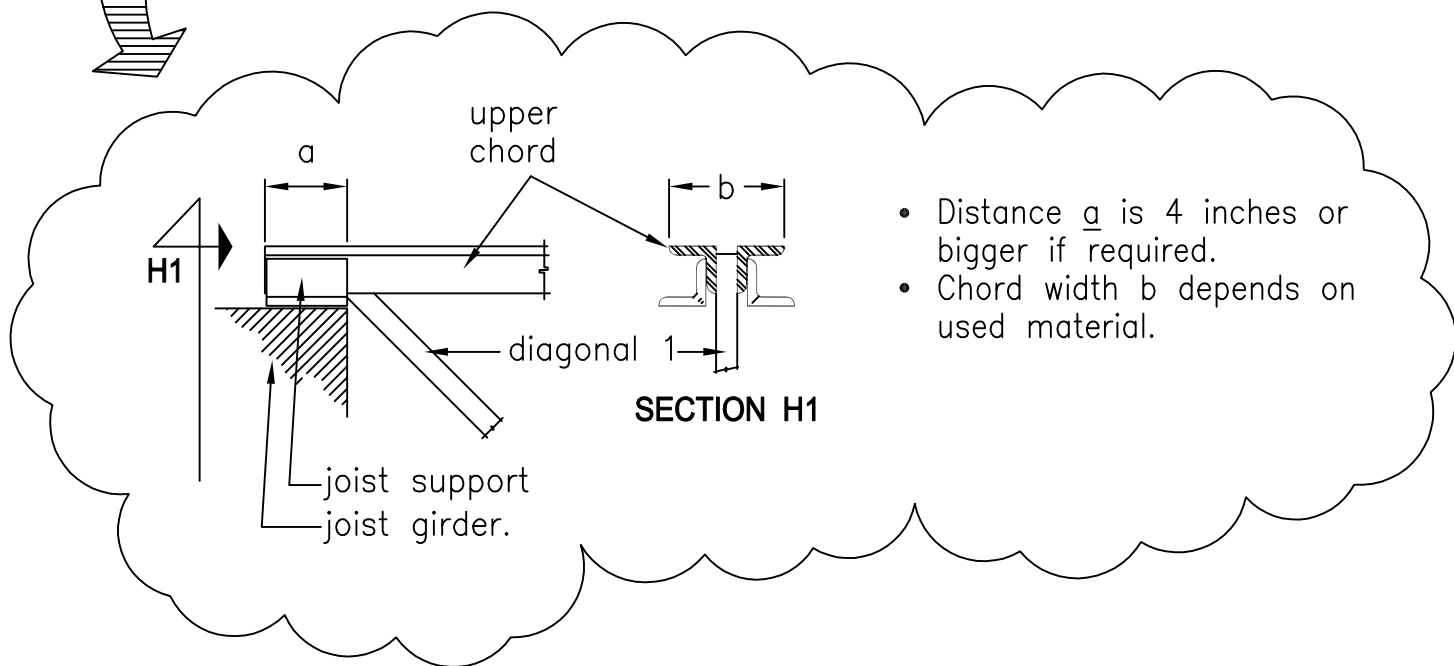
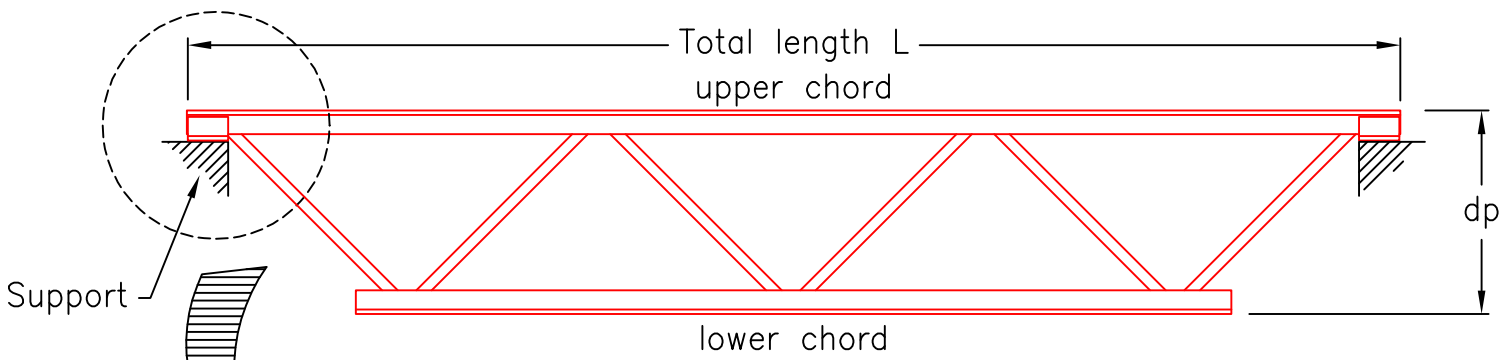
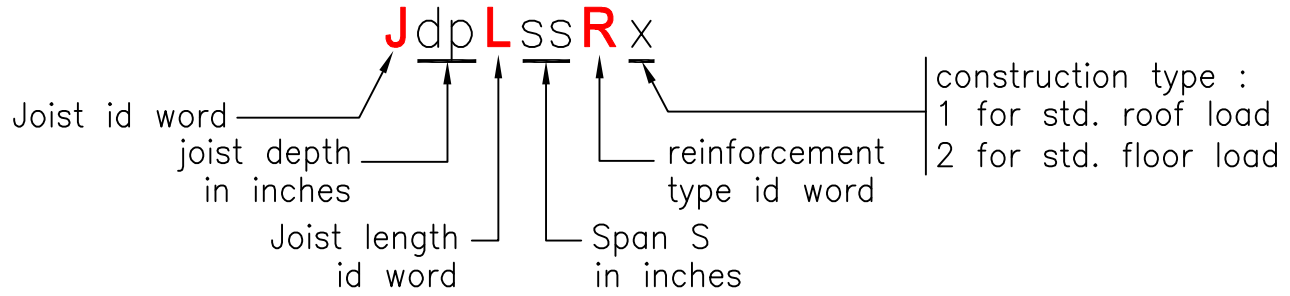




OPM PREFABRICATED STEEL JOISTS QUICK REFERENCE



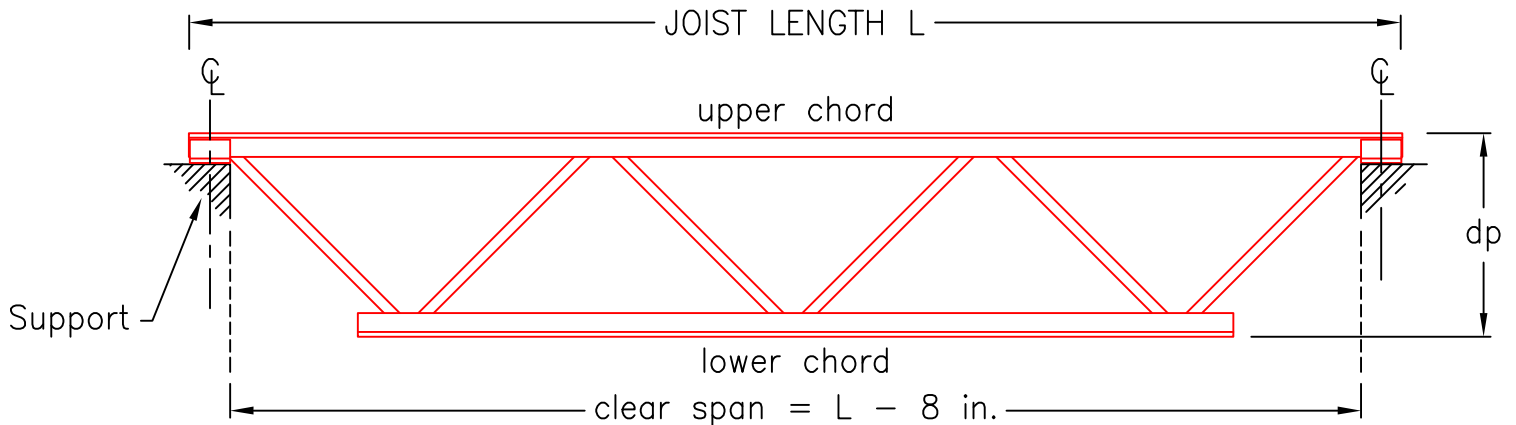
OPM PREFABRICATED STEEL JOISTS FOLLOW A VERY SIMPLE NOMENCLATURE BASED ON ITS DEPTH AND THE CLEAR SPAN TO BE SAVED, TAKE A LOOK AT THE FOLLOWING EXAMPLE.



THIS IS THE STANDARD NOMENCLATURE, STEEL JOISTS CAN BE FABRICATED WITH ANY LOAD REQUIREMENT, DEPTH AND LENGTH.



OPM PREFABRICATED STEEL JOISTS QUICK REFERENCE



IF YOU HAVE A 24' SPAN AND YOU'RE REQUIRING A JOIST TO TAKE FLOOR LOADS, (SEE TABLE 1), WITH A MAXIMUM DEPTH OF 18", THEN THE CODE FOR SUCH A JOIST WOULD BE J18L288R2

PLEASE NOTE THAT JOIST LENGTH L IS YOUR CLEAR SPAN PLUS 8 INCHES FOR SUPPORT (4 INCHES EACH END) SO WHEN YOU REQUEST A JOIST, YOU MUST SPECIFY YOUR CLEAR SPAN S.

OTHER DATA YOU MAY SPECIFY COULD BE :

- CLEAR SPAN
- RESTRICTIONS TO JOIST DEPTH d_p
- MINIMUM LOAD TO BE APPLIED IN PSF
- JOIST MINIMUM SPACING
- UPPER CHORD SUPPORT EXTRA LENGHT

GIVE US A CALL OR EMAIL A FEW LINES AND ALLOW US TO DESIGN THE JOIST TO MEET YOUR NEEDS, TAILOR SUIT AT NO EXTRA COST.

Table 1

STD. LOADS	SUGGESTED JOIST USE		L () L
	ROOFINGS	FLOORS	
FROM	30.7	108.5	
UP TO	38.9	128.9	

FOR MORE INFORMATION ABOUT THE OPM STEEL JOISTS, PLEASE GIVE US A CALL TO +52 (614) 410 1577 OR VISIT US IN THE WEB ON OPM.COM.MX

A HIGH QUALITY
PRODUCT FROM
OPM

OPM PREFABRICATED STEEL JOISTS QUICK REFERENCE



A HIGH QUALITY
PRODUCT FROM
OPM

OPM PREFABRICATED STEEL JOISTS QUICK REFERENCE

